

**ADELAIDE
UNIVERSITY
SPORT**

Facilities Policy

Contents

| | |
|--|---|
| Scope..... | 3 |
| AUSF Facilities | 3 |
| Facility Use | 4 |
| Facility Documentation | 4 |
| User Groups | 4 |
| Current User Groups | 5 |
| Grants for Venue Hire | 5 |
| Liquor Licensing..... | 6 |
| Facility Booking..... | 7 |
| Booking Agreements | 7 |
| Maintenance | 7 |
| Appendix 1 – North Adelaide Playing Field Use Requirements | 8 |

Scope

This Policy relates to the facilities managed by AUSF and facilities hired by AUSF affiliated clubs.

AUSF Facilities

On behalf of The University of Adelaide, AU Sport manages the following facilities:

North Adelaide Sporting Grounds - North Adelaide Parklands

- Park 12
- The Longroom
- Park 10
- Graduates Oval
- The Graduates Clubroom

The Sports Grounds located in the North Adelaide Park Lands at Park 10 (Warnpangga) and Park 12 (Karrawirra) are maintained and used by the University of Adelaide and its Sub-Licence Holders under the Terms and Conditions of a Park Lands Sporting Licence issued by the Adelaide City Council.

Further information regarding the facility can be found in Appendix 1.

Irene Watson Room - Level 5, Union House, University of Adelaide

This training room is predominantly used by the Karate, Table Tennis, Tae Kwon Do and Wing Chun clubs. The room can be booked for other activities and Fitness Hub group classes, such as Yoga, Pilates or Dance.

Thebarton Campus Indoor Facility - Winwood Street Store No. 5, Thebarton

Our Judo and Basketball clubs call this location home. There is limited availability for other bookings.

Waite Campus Playing Fields - Corner Claremont Avenue and Fullarton Road, Netherby

These fields are home to the AU Rugby Union Club and also utilised by the AU Touch and AU Gridiron Clubs. The Adelaide University Women's Rugby 7s team, the Roma's also utilise Waite Oval. The playing fields comprise two main ovals but can also cater for Soccer, Softball and Cricket.

Barr Smith Boat Shed - War Memorial Drive, North Adelaide

The AU Boat Club use the Boat Shed and is available to hire for functions.

West Beach Recreation Hub and Hockey Centre - Burbridge Road, West Beach

The West Beach Recreation Hub has developed into a truly multi-sport hub for both competitive sports and recreational pursuits. The facility has four cricket ovals, four soccer pitches and up to seven junior football ovals and is home of the AU Hockey Club, one of SA's oldest hockey clubs. This facility boasts an international standard artificial water-based hockey field. Other clubs who operate out of West Beach include AU Soccer, AU Scuba, AU Mountain and AU Gliding.

Morgan Shack - Scott's Creek

The AU Water Ski Club is the primary resident and caretaker club of this riverfront property, which is located on the mighty Murray River at Scott's Creek near Morgan (approximately 2 hours' drive from Adelaide). Outside of weekends booked by the AU Water Ski Club, affiliated AU Sport Clubs and those associated with the University of Adelaide can hire the facility.

Fitness Hub – Level 5, Union House, University of Adelaide

The Fitness Hub is Adelaide University Sport's gym on campus at the University of Adelaide available to students, staff and also anyone outside of the University community looking to achieve their fitness goals with state of the art equipment and experienced trainers. It's the perfect place to unwind from a day of work, classes or study in a supportive and welcoming environment.

Esports Room - Lady Symon LS110, University of Adelaide

The Esports room at the University of Adelaide is the newest on campus facility managed by AUSF and is home to the Adelaide University Esports Club. It features 10 top of the line gaming PCs and chairs along with extra sitting space for users to bring their own gaming equipment. It also features a dedicated lounge and sitting area fitted with a screen and sound bar for streaming. The room is available for Esports club member use during university hours, and bookings for team trainings and competitions. Popular games include League of Legends, Dota 2, CS:GO, Rocket League, F1, Street Fighter V and more.

Stonefield Gliding Facility - Stonefield Road, Stonefield

Located just north of Truro in regional SA, you will find our Gliders soaring with the eagles in the skies. Our Gliding Club is based at the Stonefield airfield, where they fly on most weekends.

Facility Use

AUSF facilities are provided to affiliated clubs for training and other club activities. AUSF are responsible for the maintenance of these facilities with the support of specific clubs where applicable. In some cases, The University of Adelaide contributes to maintenance costs.

Facility Documentation

The following documents document facility hire arrangements:

- Affiliation Agreement – specific to club
- User Group Agreement – specific to facility
- Profit Share Agreement – specific to facility

User Groups

User groups are formed when multiple affiliated clubs have access to an AUSF facility. Each user group is governed by a User Group Agreement which forms part of the individual Club's Affiliation Agreement.

User Group Agreements vary depending on needs of the clubs and facilities however at minimum the following shall be recorded in the agreement:

- An agreement to abide by the AUSF Code of Conduct and maintain the values of cooperation for the greater good of the facility and sport.
- The establishment of a committee to manage the facility. The Committee shall consist of one elected delegate from each user, and an independent Chairperson appointed by AUSF. A quorum shall be at least 50% of the membership of the Committee, which includes the Chairperson. All appointments shall be annual and operate for a calendar year.
- The establishment of equitable use of the facility between clubs

- The Committee and AUSF shall ensure that suitable funds are collected and retained for use when maintaining the facility. For facilities with liquor licenses, this element is formalised in the Profit Share Agreement.
- Liquor License requirements and responsibilities
- Cleaning and maintenance responsibilities and who is responsible for each task and cost
- Any additional information relevant to the facility or User Group.

Current User Groups

The following User Groups are currently active:

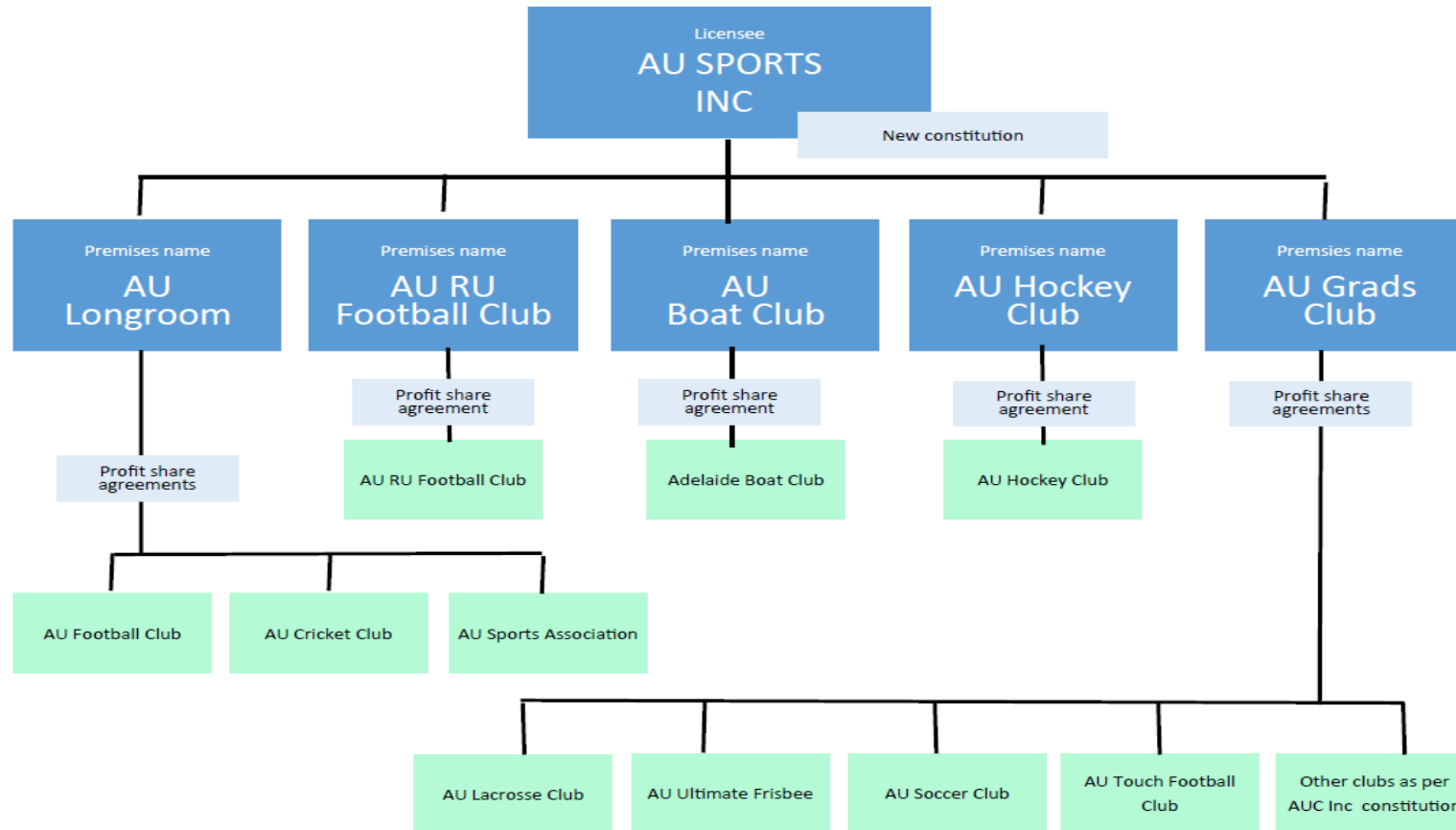
| Facility | Users | Agreements | Liquor Licence – Appendix 2 |
|---------------------------|---|--|-----------------------------|
| Waite | AU Rugby Union Club AU Touch Club AU Soccer AU Gridiron | User Group Agreement Profit Share Agreement | 51307285 |
| The Graduates Clubhouse | AU Soccer AU Touch AU Ultimate Frisbee AU Lacrosse AU Athletics Fitness Hub SA Road Runners | User Group Agreement Profit Share Agreement | 51310791 |
| Morgan Shack | AU Waterski | User Group Agreement | N/A |
| Park 12 – Longroom | AU Cricket AU Football | User Group Agreement Profit Share Agreement | 50905373 |
| West Beach Recreation Hub | AU Hockey AU Soccer AU Scuba AU Gliding AU Mountain | User Group Agreement Profit Share Agreement | 51303647 |
| Boathouse | AU Boat | Profit Share Agreement | 50905438 |

Grants for Venue Hire

AUSF provide grants for sporting clubs which do not have access to facilities owned or leased by The University of Adelaide or AUSF. The total for this grant across all affiliated clubs is defined by the AUSF Board of Management as part of the annual budget process. Refer to the Grant Handbook and Affiliation Agreement for further details.

Liquor Licensing

AUSF maintain all liquor licenses using the following model:



Facility Booking

Facilities can be booked via the AUSF website by clicking [here](#). Alternatively, an email request can be sent to sportsfacilities@adelaide.edu.au.

Booking Agreements

External hirers are required to sign a facility booking agreement upon confirmation of the booking. Refer to the Operations Manual for further information.

Maintenance

AU Sport aims to maintain safe facilities and inspections and maintenance is carried out at all facilities on a regular basis. Any damage or faults need to be reported by a club official ASAP to sportsfacilities@adelaide.edu.au who will follow up the damage.

With any facility, a Sinking Fund must be established and maintained, to ensure the ongoing financial support for facility maintenance. Details on the AU Sport strategy for managing Sinking funds can be found in the AU Sport Board Paper 'Sinking Funds, An investment strategy' (Feb 2013).

Appendix 1 – North Adelaide Playing Field Use Requirements

Classification of fields

This policy is in line with the SA Government's Water Restrictions and Prioritising of Sports Grounds Policy. Under the SA Government's Water Restrictions and Prioritising of Sports Grounds Policy, all Sports Fields must be prioritised and graded from Elite to Lower Suburban with the level of maintenance set. In the instance of water restrictions, Park 12 Fields are classed as an 'Elite Level Fields' and Park 10 Fields is classed as a 'High Level Fields'.

All remaining playing fields and facilities will always be maintained at a "fit for purpose" level within the SA Government's Sports Fields Maintenance requirements particularly in relation to the use of scarce water resources.

Field Hire – External

Field hire is at the discretion of the AU Sport Administration Officer responsible for facilities bookings and subject to consultation with grounds staff in order to verify that this non-club use will not be detrimental to the marked fields.

The University encourages casual users, who are defined as those members of the community that wish to use the Licenced Area for sport and recreation for **irregular or infrequent periods**, to contact the AU Sport to ensure their proposed use of the grounds occurs during periods of time when the University Clubs and Sub-Licence Holders are not scheduled to use the area.

Fees

Booking fees are set by AU Sport and reviewed annually. Additional fees may be incurred for preparation of use, such as line marking.

Cancellation of use

AUSF, in consultation with grounds staff, maintains the right to limit, postpone or cancel the use of fields at short notice to preserve the quality of the fields. This could also involve determining the type of boot (studded or not) that can be used on the grounds. This is likely to occur with the case of wet weather or drought. All those affected will be notified as soon as possible for alternate arrangements to be made.

AU Sport also reserves the right to cancel bookings with clubs and external organisations in the case of ongoing misuse.

All clubs, which breach this policy, will face the following penalties:

1. All clubs/associations that do not comply with these rules and conditions shall be subject to firstly a fine of \$100.00 and secondly a ban from use on University of Adelaide Playing Fields for a period of twelve (12) months.
2. Any subsequent non-compliance by a club/association will result in a ban from using the University of Adelaide playing fields for a period of up to five (5) years, as determined by the AU Sport Board of Management.
3. All AU Sport Clubs that do not comply with these rules and conditions shall not be eligible for or receive any AU Sport grants for that year or the next year.

Maintenance

AU Sport has a duty of care to ensure that the fields are maintained and safe for use. Any damages or incidents/near misses resulting from maintenance issues need to be reported to AU Sport in order that they can be addressed.

The University meets the lease maintenance costs for the provision of grounds and buildings for sport and recreation; and a close working relationship is maintained between AUSF and the AUSF and the grounds staff in order to maximise efficiency in regard to provision, maintenance and preparation of grounds.

Should ground staff of Park 10 or Park 12 have concerns regarding the safety of play on the turf or the requirement to restrict play to protect the turf from significant damage, then they will contact the AU Sport General Manager without delay. This relates to both the training and the playing of matches.

AU Sport will then coordinate the negotiation between the club and the grounds staff. The outcome may be:

- no play or
- restriction of training space (such as centre wicket quarantined) or
- limited play (reduced number of matches or training) or
- play and monitor grounds over time.

In the negotiation phase, special consideration will be provided to any team in the setting of likely finals participation. In regard to A Grade finals, the possible outcome of 'no play' as listed above is not an option for negotiation, unless there are significant player safety concerns.

Lights and Fobs

Lighting at Park 12 and Park 10 are fixed to turn on and off at pre-determined times during the year to suit the needs of the users.

Each AUSF Club that requires regular use of the lights is given a fob to activate the lights at these pre-determined times. AUSF maintains a record of those who have fobs and they are required to return their fob at the end of their season.

If a fob is lost, it must be reported to AU Sport and that club will be charged for the replacement cost.

There is no additional cost for the use of the lights for an AU Sport Club; however, if an external user of the Park 12 and Park 10 areas wishes to use the lights for the duration of their booking, an additional fee for lights would occur.

Access to Buildings

AUSF Clubs may gain access to buildings on the Park 10 and 12 areas depending on their requirements.

Each AUSF Club that requires regular use of a building is given keys to access the building. AU Sport maintains a record of those who have keys through a key register. If keys are lost, the incident must be reported to AU Sport and that club will be charged for the replacement cost.

Parking and use of Vehicles

In line with the Adelaide City Council licence conditions, parking of any vehicles in the Park 12 Grandstand Car Park without a valid parking permit is strictly prohibited.

The driving/riding and/or parking of any vehicles of any description on University of Adelaide playing fields without a valid parking permit is strictly prohibited.

All clubs/associations that use the playing fields are responsible for the enforcement of this policy in relation to both their own members and supporters and also those of visiting teams.

Signage

In line with the agreement with Adelaide City Council, sponsors signage is only allowed to be visible on competition days. It must not be visible at all other times. Signage promoting club events and recruitment drives are allowed but are only allowed up for a reasonable time prior to the event, maximum one month.

Use of barbeques

Park 12 (Main University Oval): All barbeques must be held entirely within the grandstand car park or outside of the fence surrounding the playing fields.

Park 10: It is preferred that all barbeques be held on the northern side of the oval closely adjacent to the dirt jogging/running track.

Permission via email to AUSF to hold barbeques at the playing fields must first be obtained from the AUSF at least seven (7) days prior to the holding of the barbeque, unless an ongoing agreement is in place. All conditions imposed by AUSF on the holding of a barbeque at the playing fields must be strictly adhered to by those holding the barbeque. Those holding a barbeque will be responsible for any damage caused by or during the permitted barbeque and shall be held fully liable to pay for all such damage.

Marquees and pegging

If an AUSF Club or external group/club wishes to use marquees and pegging for events on the Park 12 and Park 10 ovals, they must be granted permission from AUSF prior to the event. The AU Sport will notify the ground staff to mark out the irrigation, in order that users know where not to place marquees and pegs. Users that do so without permission will be fined and will be liable for any damaged caused.

Rubbish

All users of the Park 12 and Park 10 Ovals are asked to clean up after themselves and all clubs/associations that use any of the playing fields are responsible for the enforcement of this in relation to both their own members and supporters and also those of visiting teams. If excess rubbish is left on the ovals, a fine of \$100.00 will be charged to the group using the area.